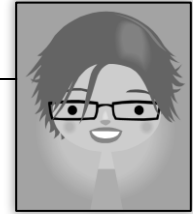


Mindy the Matchmaker



On October 1, 2019, Mindy established Mindy the Matchmaker. She completed the following transactions during the month of October:

Business Transactions

- 10/1 Mindy invests \$5000 into her new business, "Mindy the Matchmaker"
- 10/3 Mindy purchases \$300 of supplies on her credit card (accounts payable).
- 10/7 Mindy earns fees of \$4000 from customers in cash.
- 10/9 Mindy purchases new equipment for the business for cash, \$2000.
- 10/14 Mindy earns \$450 of fees from customers, but they don't pay her yet (accounts receivable).
- 10/17 Mindy makes a \$90 cash payment on her credit card (accounts payable).
- 10/30 Mindy counts up her inventory at the end of the month and sees she has \$50 worth of supplies left. Record her supplies expense for the month (how much she used).
- 10/31 Mindy withdraws \$50 from her business for personal use.

Accounting Equation Chart

		ASSETS				LIABILITIES	OWNER'S EQUITY		
		Cash	Accounts Receivable	Supplies	Equipment	Land	Accounts Payable	Mindy, Capital	Description
<i>Beginning</i>		\$0	\$0	\$0	\$0	\$0	\$0		
	10/1								
	10/3								
	10/7								
	10/9								
	10/14								
	10/17								
	10/30								
	10/31								
<i>Ending</i>									

Mindy the Matchmaker

**Mindy the Matchmaker
Income Statement
For the Month Ended October 31, 2019**

REVENUES:									
FEES EARNED									
EXPENSES:									
SUPPLIES EXPENSE									
TOTAL EXPENSES									
NET INCOME									

**Mindy the Matchmaker
Statement of Owner's Equity
For the Month Ended October 31, 2019**

BEGINNING CAPITAL								0	00
ADD: INVESTMENTS									
ADD: NET INCOME (from the Income Statement)									
LESS: WITHDRAWALS									
CHANGE IN OWNER'S EQUITY									
ENDING CAPITAL									

**Mindy the Matchmaker
Balance Sheet
October 31, 2019**

<u>ASSETS</u>						<u>LIABILITIES</u>					
CASH						ACCOUNTS PAYABLE					
ACCOUNTS RECEIVABLE						TOTAL LIABILITIES					
SUPPLIES						<u>OWNER'S EQUITY</u>					
EQUIPMENT						MINDY, CAPITAL					
LAND						TOTAL OWNER'S EQUITY					
TOTAL ASSETS						TOTAL LIABILITIES & OE					